

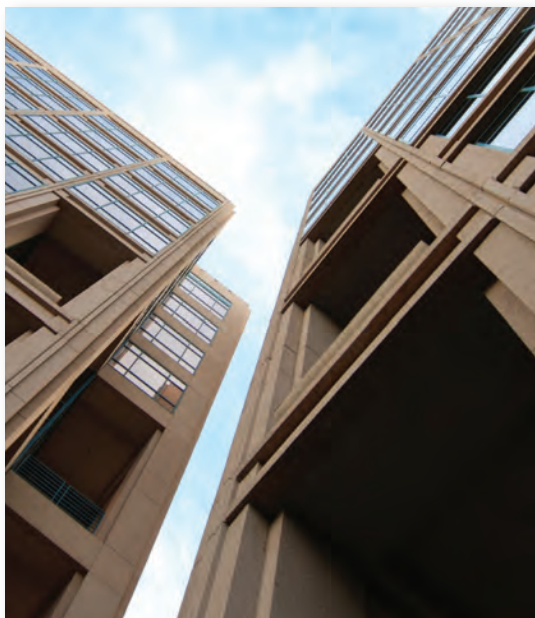


PARTNERS in Your Success

Real Estate Practice—Washington, D.C. Team

LLB&L
Locke Lord Bissell & Liddell LLP

BUILDING YOUR SUCCESS



The members of Locke Lord's Real Estate Group in Washington, D.C. work with real estate developers, loan servicers, investors and lenders in a variety of real estate and asset backed projects in the United States and Canada, related to restructurings, enforcement actions, modifications, REO matters, acquisitions, originations and workouts.

The Washington, D.C. real estate members focus on commercial real estate transactions and have significant experience in managing complex multi-property and multi-state transactions, portfolio lending, mezzanine financing, securitizations, servicing matters, new markets tax credit transactions, historic renovations, participations, syndications, inter-creditor and agency issues. They work closely with clients, in an efficient and practical manner, to maximize profit and recovery and minimize risk and loss in a highly volatile business environment.

The Real Estate Group in Washington provides legal advice and representation in all aspects of senior, mezzanine and subordinate secured debt origination, preferred and common equity investments, asset based lending and borrowing, sales, participations and other dispositions in the capital markets, and restructurings. The structure of these financings includes multi-parcel securitizations, credit enhancement and other structured finance facilities, equity-based mezzanine financings, real-estate related credit lines and construction and term loans. Our attorneys have represented some of the world's largest financial institutions, institutional investors and real estate owners in financing, acquisition, development, enforcement and REO actions related to a variety of asset types, including hotel, office, retail, multi-family residential and industrial properties.

REPRESENTATIVE CLIENTS

Our D.C. Real Estate Group works with some of the nation's largest real estate firms in some of the country's most significant projects. Current real estate clients who work with the Washington, D.C. office include:

- AES
- BB&T
- Berkadia Commercial Mortgage LLC
- Brownstone
- Capmark Bank
- Capmark Finance Inc.
- Combined Properties
- CWC Capital Asset Management
- Helios AMC
- J.P. Morgan Chase
- Morgan Stanley
- PA Consulting
- RBS Citizens
- Seneca Properties
- The Clarett Group
- United Bank
- Wachovia Bank
- Wachovia Securities
- Wells Fargo Bank

Partners



Jennifer S. Beer concentrates her practice on commercial real estate transactions and finance. Ms. Beer has been involved in complex financing transactions, restructures, enforcement actions and workouts for a variety of property types, with a particular emphasis on the hospitality industry and mixed-use projects. She represents institutional investors and loan servicers in the origination, syndication, servicing, restructuring and enforcement of securitized, floating rate, construction, mezzanine, portfolio and development loans secured by real and personal property collateral.

T: 202-220-6906 | jbeer@lockelord.com



Marvin W. Ehrlich concentrates his practice on commercial real estate and secured finance transactions. He represents clients in matters involving real estate lending, acquisitions, development, and leasing transactions with respect to retail centers, hotels, apartments, and other commercial and industrial projects. Mr. Ehrlich focuses on commercial mortgage finance, with an emphasis on mortgage loan origination, workouts, modifications, restructuring and other loan servicing issues.

T: 202-220-6909 | mehrich@lockelord.com



Christopher J. Hart, co-head of the Firm's Real Estate and Finance Group, has more than 20 years of experience in commercial real estate transactions, including acquisitions, dispositions, intercreditor negotiations, financings, restructurings, workouts and enforcement actions. He has significant experience in managing complex, multi-state transactions, focusing on the hotel and hospitality industry as well as mixed-use projects. His finance practice includes all aspects of secured debt origination, sales, participations, syndications and other dispositions in the capital markets, and restructuring. He has been involved in numerous portfolio and pooled property dispositions throughout the United States.

T: 202-220-6903 | chart@lockelord.com



Adam Lichtenstein concentrates his practice in the area of commercial real estate finance, representing commercial banks, institutional lenders, insurance companies, and loan servicers in a wide range of traditional, sophisticated and innovative financing arrangements. His transactions involve the origination, servicing, restructuring and enforcement of loan products throughout the U.S., Canada and Puerto Rico. The asset types secured in such loan transactions include office, retail, residential, hospitality and mixed-use.

T: 202-220-6905 | alichtenstein@lockelord.com



Edward Elia Zughuib has a wide range of experience in real estate and real estate finance, including loans, workouts, foreclosures, the purchase and sale of real property, and leasing of office, retail and industrial space. He represents master servicers and special servicers in all types of loan servicing matters. Mr. Zughuib is ranked as one of *The Best Lawyers in America*, 2010 and 2011.

T: 202-220-6904 | ezughuib@lockelord.com

Associates and Counsel



John Carpenter concentrates his practice in real estate and real estate finance with a particular focus on the hospitality industry and mixed-use projects. Mr. Carpenter represents institutional lenders in both single property and complex multi-state portfolio transactions. His work involves construction, interim and permanent project financing throughout the United States and Canada and modifications, restructurings and enforcement actions. He also has experience in loan syndications, loan participations and loan servicing matters (pre and post securitization).

T: 202-220-6914 | jcarpenter@lockelord.com



David C. Heit concentrates his practice in commercial real estate law. He represents developers, borrowers, lenders and institutional investors in a range of matters, including the acquisition, disposition, financing, and leasing of commercial real property, joint venture arrangements and mezzanine financings. Additionally, Mr. Heit's finance practice includes representing master servicers and special servicers in all types of loan servicing matters.

T: 202-220-6910 | dheit@lockelord.com



Forrest Reid has represented national banks, institutional lenders and private equity funds in connection with the origination and servicing of construction loans, mezzanine loans, permanent financing, and securitized loans. Mr. Reid also advises and represents master and special servicers in connection with various matters involving securitized commercial mortgage loans held in CMBS pools, with particular emphasis on assumptions, modifications, collateral substitutions, workouts, restructures and related REMIC issues.

T: 202-220-6908 | freid@lockelord.com



Barbara Anne Spignardo concentrates her practice in commercial real estate transaction work, including financings and acquisitions, with a particular focus on the hospitality industry and mixed-use projects, and she has been involved in portfolio and pooled property dispositions. Ms. Spignardo's work involves construction, interim and permanent project financings throughout the U.S. and Canada, and the representation of institutional investors and loan servicers in origination, servicing, restructuring and enforcement actions.

T: 202-220-6912 | bspignardo@lockelord.com

This brochure is provided solely for educational and informational purposes. It is not intended to constitute legal advice or to create an attorney-client relationship. Readers should obtain legal advice specific to their enterprise and circumstances in connection with each of the topics addressed. If you would like to be removed from our mailing list, please contact us at either unsubscribe@lockelord.com or Locke Lord Bissell & Liddell LLP, 111 South Wacker Drive, Chicago, Illinois 60606, Attention: Marketing. If we are not so advised, you will continue to receive brochures. Attorney Advertising

© 2011 Locke Lord Bissell & Liddell LLP

Locke Lord Bissell & Liddell LLP
www.lockelord.com

Atlanta
404-870-4600

Austin
512-305-4700

Chicago
312-443-0700

Dallas
214-740-8000

Hong Kong
852-2273-5513

Houston
713-226-1200

London
020-7327-4534

Los Angeles
213-485-1500

New Orleans
504-558-5100

New York
212-415-8600

Sacramento
916-930-2500

San Francisco
415-318-8810

Washington, DC
202-220-6900